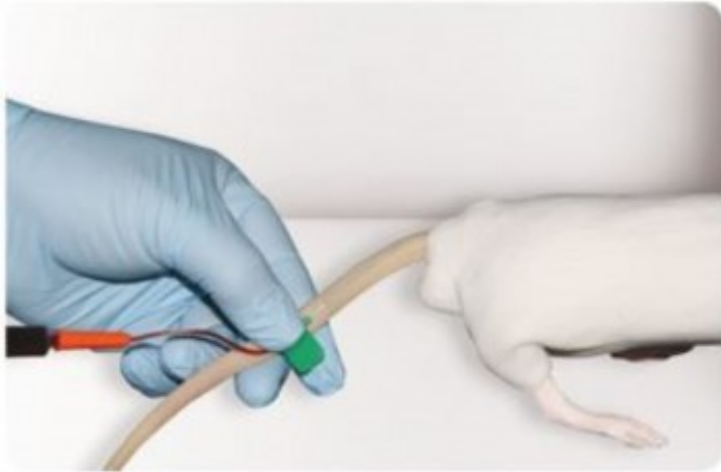


## Spare tail for BIO-RAT



Practice blood withdrawal and infusion with the training model of rat tail

**Product codes:**

Reference: BIO-RAT-TAIL

**Product description:**

This realistic tail has two main functions :

- **Practice of Infusion** : inject substances into the **two lateral tail veins, clearly visible under the skin**  
If using the tail without any fluid, you may experience the correct methodology and the “feel” of a needle entering the tail  
If red fluid is used, you can mimic a real intravenous injection in a very practical way. If located in the correct place, the injected fluid will flow into the vein. If fluid is not injected in the vein, the fluid will surround the vein and mimic bruising / haematoma
- **Training of blood withdrawal** : **the tail can be connected to an artificial blood supply** for blood withdrawal.  
A suitable size needle (26g) and syringe / butterfly tubing should be used. Insert the needle and gently take the sample. If located correctly, fluid will enter the syringe and the fluid may be observed leaving the pre-filled tubing.

**Product features:**

**Available models**

